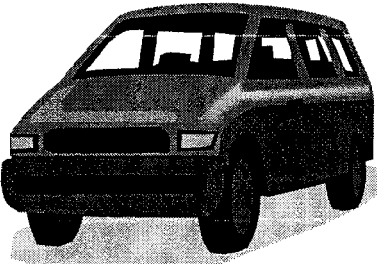
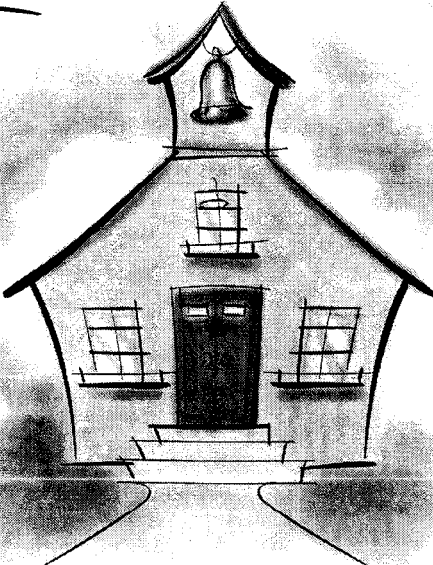
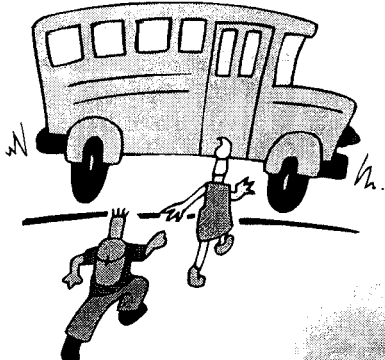


# Student Arrival and Dismissal Plan

Regency Park Elementary School

**Revised February 2006**

Let's make safe and healthy choices!



We are encouraging all families living in the Regency Park Community to allow their students to walk to and from school each day. Kids today don't have as many opportunities to be as physically active as they once did. At school, physical education time is just 200 minutes every two weeks and is not conducted by a specialist. Today's children have a wider variety of television programs and video games to entertain them. These realities are keeping kids from getting regular physical activity and may be contributing to a growing number of overweight children, which has increased by 63% over the past 30 years.

*We want . . .*

*our students to arrive safely to school each day.*

*our students to return safely home each day.*

*our students to arrive to school on time.*

*our families to make healthy and safe choices in regards to how they get to and from school each day.*

#### Arrival time

##### **Breakfast eaters:**

Breakfast supervision will begin at 8:35 a.m. in the multi-purpose room. Students who eat breakfast at school are to report directly to the cafeteria upon arrival. All breakfast eaters are to arrive by 8:50 a.m. in order to have sufficient time to finish their breakfast before school begins. When students have completed their breakfast they are to proceed directly to the playground area for the morning walk.

##### **Non-breakfast eaters:**

Playground, hallway, and drop-off area supervision will begin at 8:45 a.m. Upon arrival, students are to proceed directly to the playground area for the morning walk.

*Students arriving earlier than the specified time will be asked to proceed to the office to call their families to come and pick them up. For safety's sake, please make every effort to follow these guidelines.*

### **Establishment of a vehicle free zone**

**“Students and vehicles do not mix.” As of the official start date of this revised plan, we are asking that Fancy Way (between Bridgecross and Charm Way) be established as a vehicle free zone. During drop-off or pick-up times we want families to refrain from using this area for vehicle traffic. This will allow our walking and bike riding students to approach and leave the school in a highly-visible area with a minimized risk of being put in harm's way. During school hours, Fancy Way will be a no-parking zone. This includes the west and east side.**

## **Walking**

Regency Park Elementary School is geographically situated to be a walking school for the Regency Park Community. In fact, the design accommodates this idea perfectly. The adjoining Regency Community Park provides a wonderful walking path with connecting pathways to each of the neighborhoods along the path that leads directly into the school yard on the west end of the playground. We have attached a map of Regency Park with suggested walking and biking routes from each of the major areas in the neighborhood. We highly encourage our students to use the park pathway and street sidewalks to go to and from school each day.

**Students who walk to school will be required to enter and exit through one of two entrances: parkway gate to Regency Community Park or Fancy Gate located at the east side of campus along Fancy Way. Students not accompanied by an adult will be directed to enter at the gates designated above.**

## **Automobile drop-off and pick-up**

Please see attached map to help with understanding this new plan. The parking lot will be used solely as a vehicle drop-off and pick-up area during the before and after school times. The parking lot will remain open all day and will be monitored by staff during the morning from 8:30-9:00 and in the afternoon from 3:30-3:45. All drop-offs and pick-ups MUST be done in the yellow zone along the multi-purpose room. Drop-off and pick up from any other location in the parking lot *will not be permitted* and poses an extreme danger to our students. All vehicles that plan to drop-off or pick-up students are to enter through the west driveway (near the parking lot) and exit through the east driveway. This will be clearly marked. All traffic exiting Regency Park will be required to turn right onto Bridgecross Drive during the monitored times. U-Turns on Bridgecross are illegal and are extremely unsafe. Families who drive to school and then walk their students to class will need to park along Bridgecross Drive (or another adjoining street) to do so. Student drop-off and pick-up IS NOT allowed on Fancy Way.

## **Monitored Parking Lot Procedures**

### **8:30-9:00**

During this time-period each morning vehicles will be permitted to enter the west driveway, proceed to the yellow drop-off zone, and exit through the east driveway. All drop-offs done in the parking lot MUST be done in the yellow zone along the multi-purpose room. Drop-off and pick up from any other location in the parking lot will not be permitted and poses an extreme danger to our students.

### **3:15-3:45**

Upon entering the parking lot you will see a line of orange cones dividing the driving lane. Please approach to the "wait here" sign using either lane as both lanes are being used as a waiting line. When the attendant (teacher) comes out at 3:30 or so, she will begin signaling cars to move forward into the yellow zone. This wait may cause some back-up along Bridgecross Drive. (We advise that you wait in an orderly fashion along the south curb on Bridgecross Drive. Please do not block traffic for any reason.) Please remember that you are to pick up your child(ren) along the yellow curb. While in the

parking lot, do not motion your child to come to the car until you have come to a complete stop along the yellow curb. As you exit, you will come to a sign that reads exit/return to pick up. If you exit at this point you will be required to turn right onto Bridgecross Drive. (See map for street routes for exit routes) If for some reason you are waiting an excessive amount of time, you may be directed to pull through the north portion of the parking lot and return to the line to make a second pass through the pick-up zone. All pick-ups done in the parking lot MUST be done in the yellow zone along the multi-purpose room. Pick-ups from any other location in the parking lot will not be permitted and poses an extreme danger to our students.

Please remember to use safe driving practices as doing so is also conducive to keeping our campus safe for our families.

### **Busing**

The Rio Linda Union School District will provide free busing from the Natomas Creek neighborhoods to Regency Park Elementary School each day. The transportation department will provide specific information regarding specific bus stops in Natomas Creek. All buses will drop-off and pick-up students at the bus loading area in the front parking lot.

### **Bicycles**

A bike rack is provided at the east end of the campus behind the kindergarten rooms. All students who ride their bikes to school are to follow the procedures listed here in order to maintain this privilege.

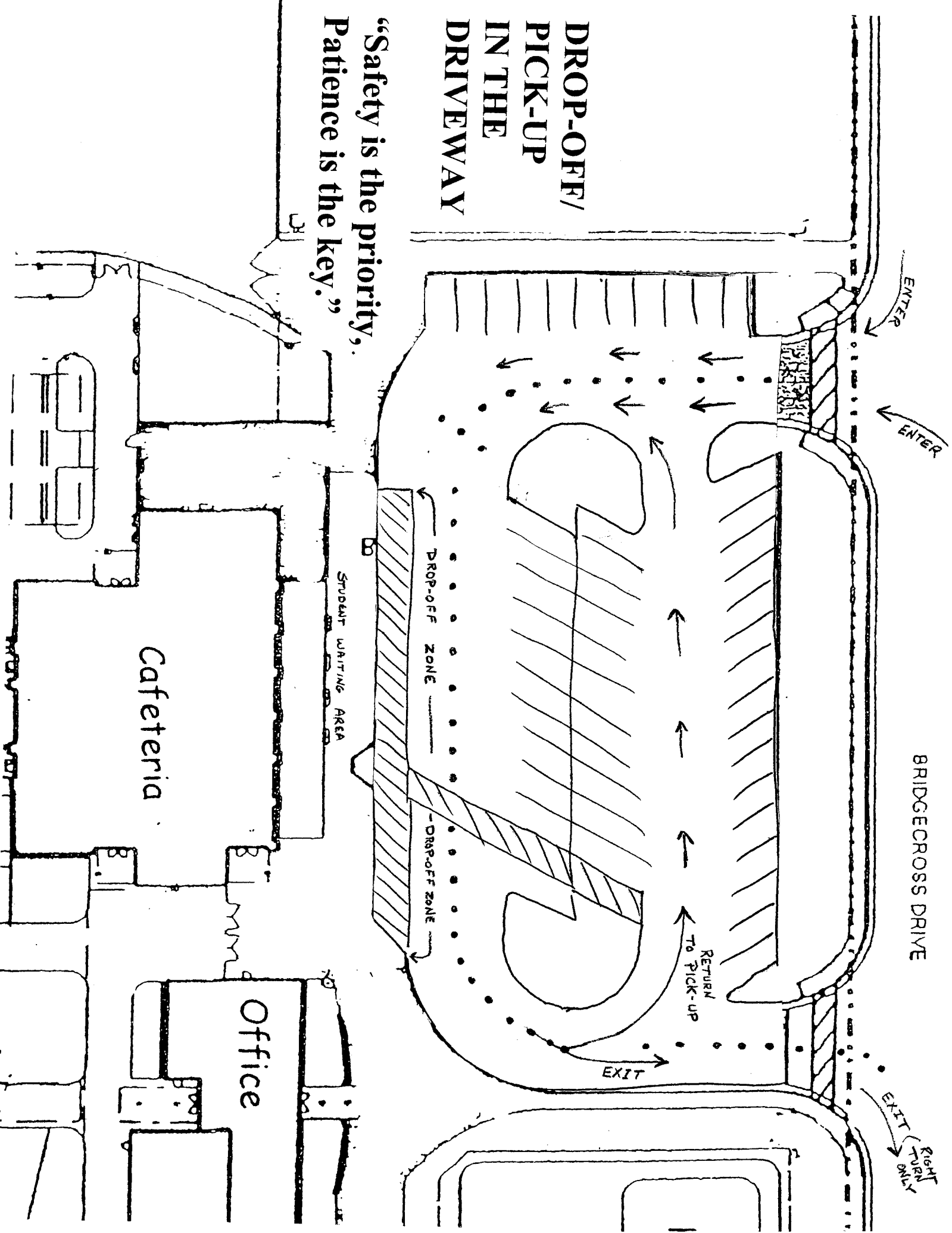
1. All bike riders are to walk their bicycles on the school grounds.
2. Bikes are to be placed in the bike rack.
3. Students are to provide and use a bike lock.
4. Wearing a bicycle helmet is required by law.

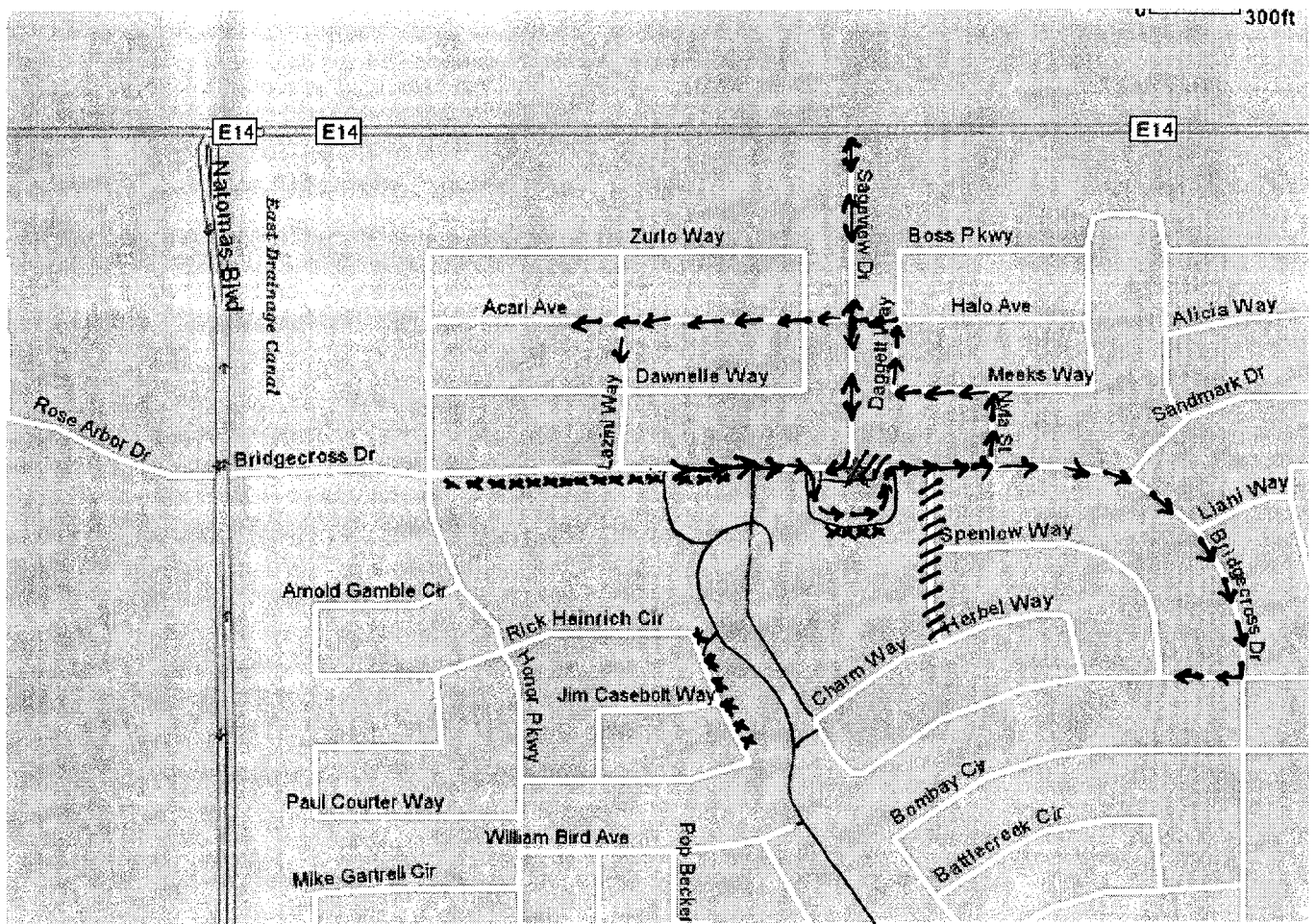
### **Other forms of transportation:**

Although we believe that scooters, roller blades, skate boards, etc. are all fine ways to travel to school, our facility does **not** have secure storage areas for these items. For this reason, we are asking that children do not bold travel to school using these items.

**DROP-OFF/  
PICK-UP  
IN THE  
DRIVEWAY**

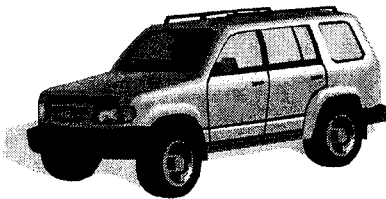
**“Safety is the priority,  
Patience is the key.”**



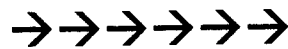


## Driving Around the School

“If you must.”



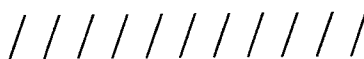
**DRIVING PATHS**

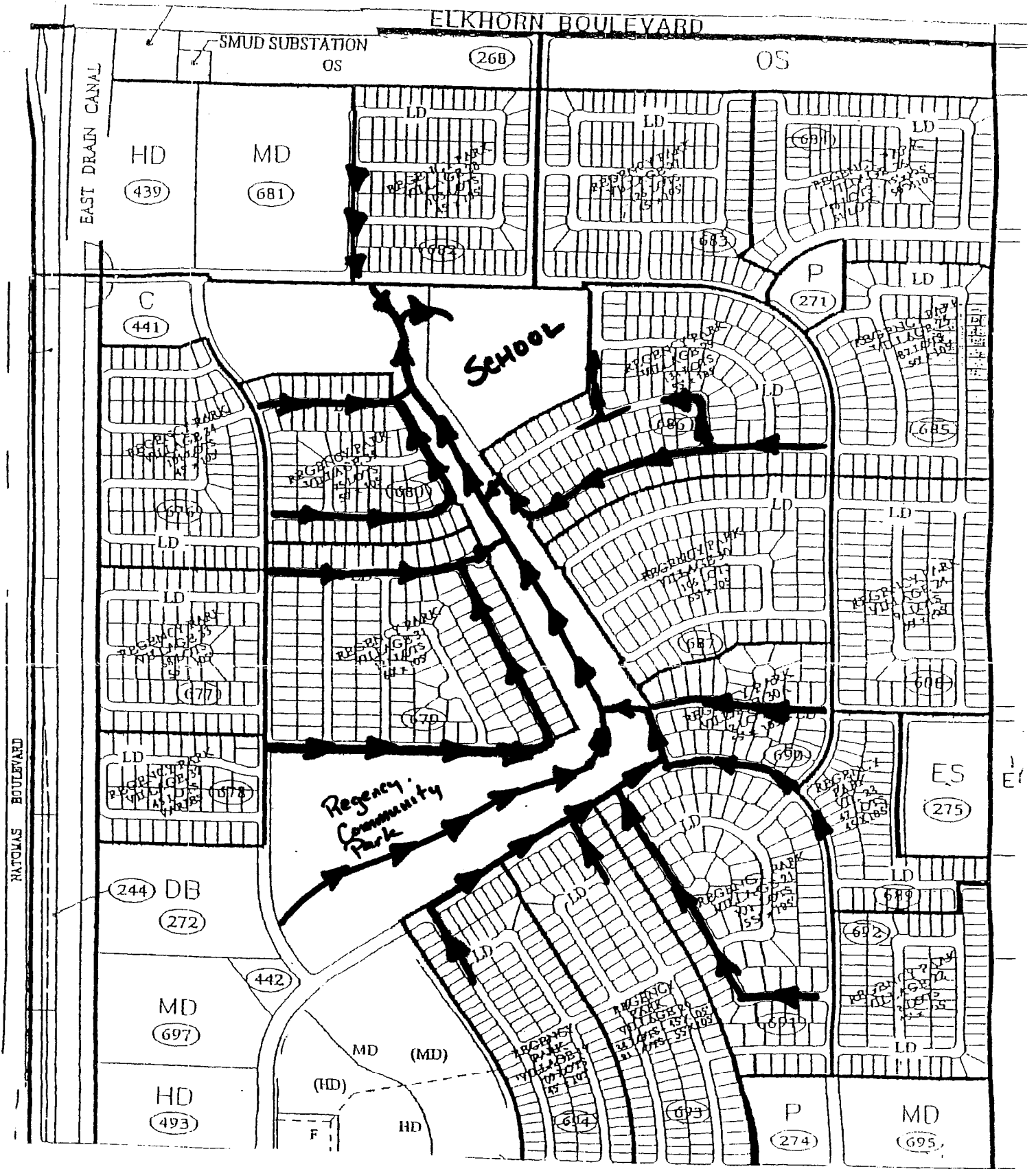


**RECOMMENDED PICK-UP/  
DROP-OFF LOCATIONS**

**X X X X X**

**VEHICLE FREE ZONE DURING PICK-UP AND  
DROP-OFF TIMES**





Suggested Walking and Biking Paths to School

